

PRE  
MIUM  
ORGA  
NIC

**THE FORMULATION GUIDE**  
ALPIN HEILMOOR EXTRACT™

# AHE

## Content

### Overview:

Formulating with AHE	4
Examples: Cleansing	6
Examples: Skin Care	8
Examples: Masks / Patches	10
Examples: Make-up	12
Examples: Hair / Scalp	14
Examples: Oral	16

### Formulations:

AHE Day Cream sensitive	20
AHE BB Cream	24
Purifying Foam Cleanser	28
Shape Memory Mask	30
T-Zone Heilmoor Mask	32
Moisturizing Eye Patches	34
Compact Foundation	36
AHE Toothpaste	40
AHE Hair Shampoo	42
Moisture Hair Mask	44

# KEY FACTS ON FORMULATING WITH AHE

Formulating with ALPIN HEILMOOR EXTRACT™ is versatile and offers many options. The following guide gives you some examples of existing products and shows the breadth of possible applications. First of all, some facts and tips on formulation:



**PH-Value:** 5.0 – 7.5  
Products with AHE on the market vary from PH 4 to 9 - so far.



**Temperature:** Acids change their composition after long-term treatment at 95 degrees Celsius for 60 minutes.



**Solubility:**  
AHE is approx. 90 % water soluble.



**Predispersion:** AHE is usually added as an extra phase at the end, before final homogenization, and is thus processed without any problems. No special, separate predispersion has to be taken into account.



**Preservation:** Products with AHE are easy to preserve and the required microbiological die-off kinetics according to DIN 11930 are easy to achieve.



**Viscosity:** Only low viscosity products should have a "shake before each use" note printed to ensure that AHE is always present evenly.

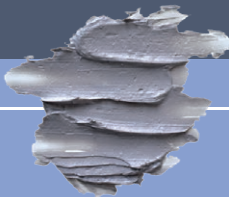
HEILMOOR MILKY  
CLEANSER

0.1%



BIOACTIVE MOOR  
MUD CLEANSER

0.1%



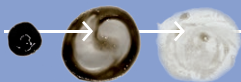
SOLID SOAP

3.0%



ANTI-ACNE  
CLEANSING GEL

1.5%



AHE CLEANSING  
FOAM

2.5%



PURIFYING FOAM  
CLEANSER

1.5%

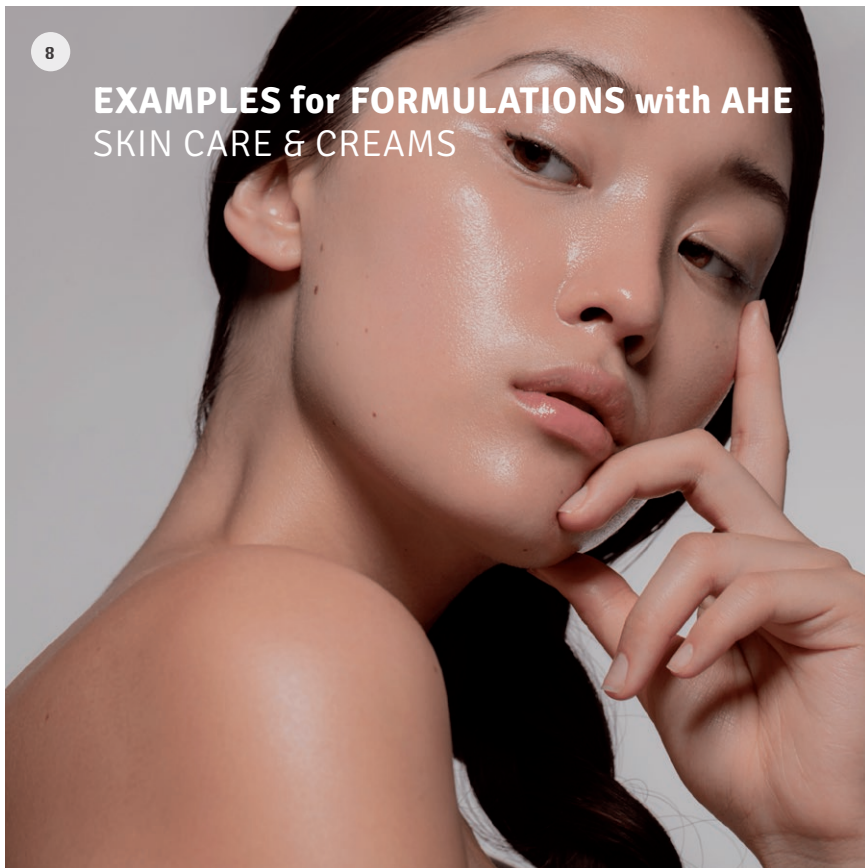


EXAMPLES for FORMULATIONS with AHE  
CLEANSING

7



## EXAMPLES for FORMULATIONS with AHE SKIN CARE & CREAMS



AHE DAY CREAM  
sensitive

**0.1 - 1.5%**



AHE DAY CREAM  
oily skin

**2.5%**



AHE LIP BALM

**2.5%**



AHE SERUM

**0.2%**



AHE SUNSCREEN  
SPF30+, PA+++

**0.3%**



MOISTURIZING  
CREAM

**0.2%**





**AHE PEEL-OFF-  
MASK**

**5.0%**

**AHE PURIFY-  
ING-MASK**

**5.0%**

**T-ZONE  
HEILMOOR MASK**

**5.0%**



**SHAPE MEMORY  
MOISTURISING  
MASK**

**3.0%**



**ALPIN  
MOISTURIZING  
EYE PATCHES**

**3.0%**

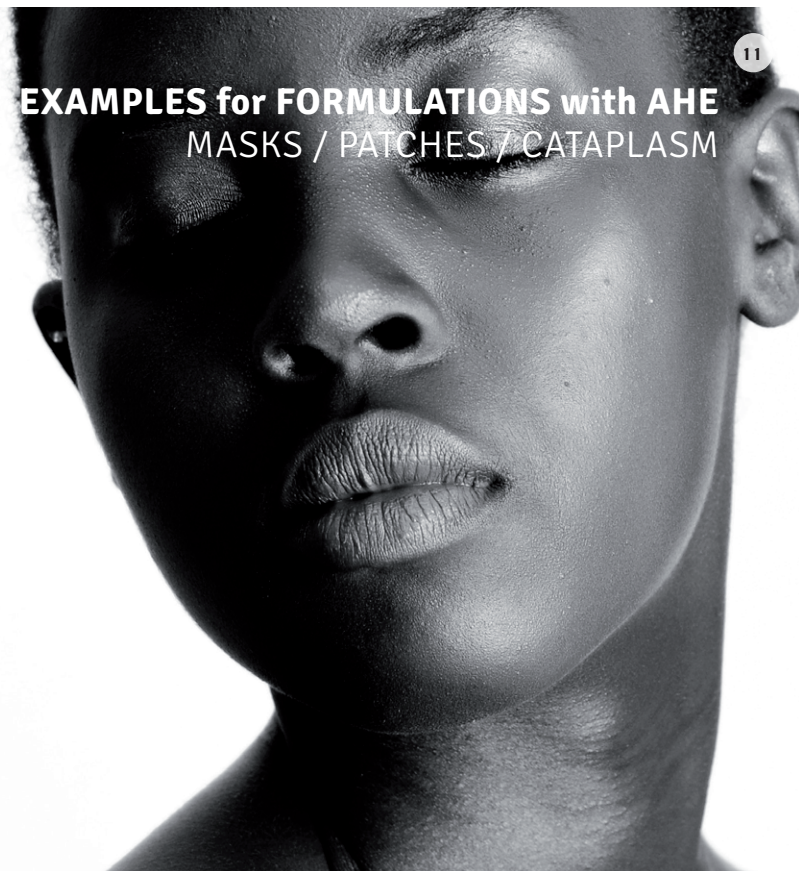


**ALPINE  
CATAPLASM**

**2.0%**



**EXAMPLES for FORMULATIONS with AHE  
MASKS / PATCHES / CATAPLASM**



## EXAMPLES for FORMULATIONS with AHE MAKE-UP

ANTI-ACNE  
FACE POWDER

**1.0%**



ANTI-POLLUTION  
COMPACT  
FOUNDATION

**1.0%**



AHE BB CREAM

**0.25 - 4.0%**



## EXAMPLES for FORMULATIONS with AHE HAIR / SCALP



AHE  
HAIR SHAMPOO

0.3%



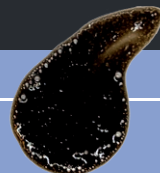
AHE HAIR  
CONDITIONER

0.3%



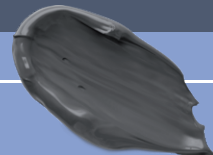
AHE SCALP  
CLEANSING-  
MASK

5.0%



MICROBIOME  
MOISTURE HAIR  
MASK

1.0%





## EXAMPLES for FORMULATIONS with AHE ORAL



AHE TOOTHPASTE

**5.0%**



AHE MOUTH  
WASH

**1.0%**



## FORMULATIONS WITH AHE

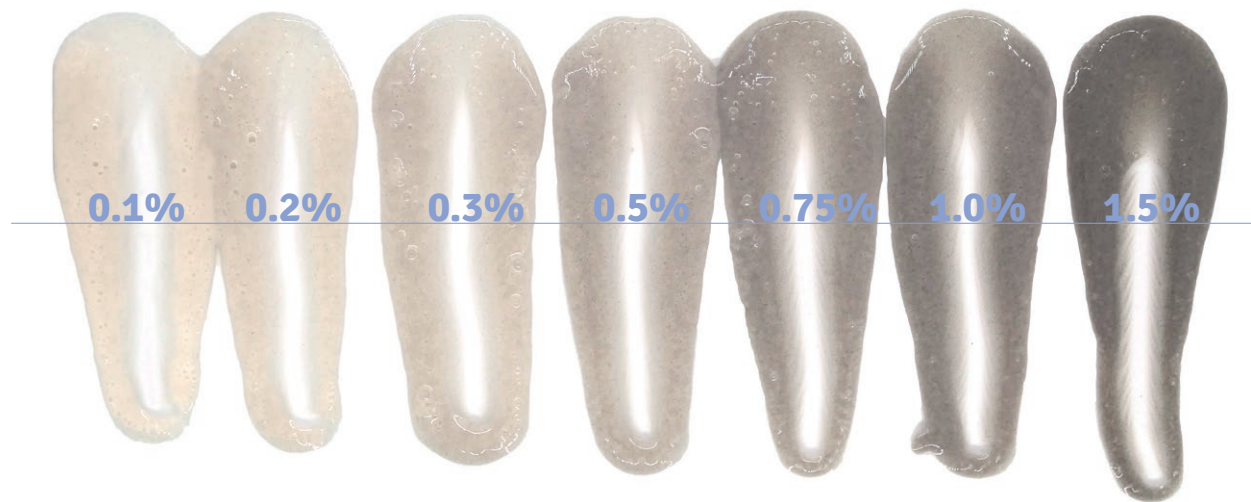
---

The following small selection of formulations with ALPIN HEILMOOR EXTRACT™ give an insight into the diverse textures and applications of AHE. The products were developed by **PREMIUM ORGANIC** as well as by our **PARTNERS** and show the range of the active ingredient

---

Please contact us directly for more informations on further formulations, samples and products.

**AHE DAY CREAM**  
sensitive samples  
with different  
concentrations  
of AHE



# AHE DAY CREAM sensitive

with different concentrations of AHE

	INGREDIENT / TRADE NAME	INCI	%
W	WATER, DEIONIZED	Aqua	70.15/70.05/69.95/69.75/ 69.5/69.25/68.75
	HAMAMELIS LEAVES BIO EXTRACTIVE	Glycerin + Aqua + Hamamelis Virginiana Leaf Extract	5.00
	ARLACEL LC MBAL PW-(MV) SP	Sorbitan Stearate + Sorbityl Laurate	3.00
	ALPIN HEILMOOR EXTRACT™ (AHE)	Peat Extract	0.1/0.2/0.3/0.5/ 0.75/1.0/1.5
F	CRODAMOL ML MBAL-LQ-(RB)	Myristyl Lactate	5.00
	TEGOSOFT MM MB	Myristyl Myristate	5.00
	COCOA BUTTER REFINED	Theobroma Cacao (cocoa) Seed Butter	2.00
	ALMOND OIL COLD PRESSED, ORGANIC	Prunus Amygdalus Dulcis (sweet Almond) Oil	2.00
	SHEABUTTER REFINED	Butyrospermum Parkii Butter	2.00
T	HYDROLITE 5 GREEN	Pentylene Glycol	5.00
	UNIQUESENS SFE SYSTEM	Pectin + Xanthan Gum + Carrageenan	0.75
		<b>Total:</b>	<b>100.00</b>

W = Water phase; F = Fat phase; T = Thickenner phase



## PROCEDURE:

1. Separately heat up water phase (phase W) and fat phase (phase F) to 80°C.
2. Add fat phase to water phase while stirring with homogenizer at 10.000 rpm.
3. Add thickener phase (phase T) and then homogenize for 1 min at 15.000 rpm.
4. Cool down while stirring with a paddle stirrer at 300 rpm.
5. At below 30°C add perfume phase (phase P)
6. Finally homogenize again at 15.000 rpm.

by PREMIUM ORGANIC



**AHE BB CREAM**  
samples  
with different  
concentrations  
of AHE





# AHE BB CREAM

with different concentrations of AHE

	INGREDIENT / TRADE NAME	INCI	%
W	WATER, DEIONIZED	Aqua	51.69/51.44/51.19/50.94/50.44/ 49.94/49.44/48.94/48.44/47.94
	PANTHENOL 75 W	Panthenol + Aqua + Citric Acid	1.00
D	EMULGADE PL 68/50	Cetearyl Glucoside + Cetearyl Alcohol	2.50
	EUMULGIN SG	Sodium Stearoyl Glutamate	1.00
	PALMAC 98-18	Stearic Acid	2.50
	CETIOL B	Dibutyl Adipate	7.00
	FINSOLV TN	C12-15 Alkyl Benzoate	3.00
T	CETIOL CC	Dicaprylyl Carbonate	5.00
	TAPIOCA NATURAL	Tapioca Starch	2.00
	CETIOL C 5	Coco-Caprylate	5.00
	KELTROL CG -SFT	Xanthan Gum	0.20
	BUTYLENGLYKOL 1,3	Butylene Glycol	5.00
	ALPIN HEILMOOR EXTRACT™ (AHE)	Peat Extract	0.25/0.50/0.75/1.00/1.50/ 2.00/2.50/3.00/3.50/4.00
E	UNIPURE YELLOW LC182 EM	CI 77492 + Silica	0.77
	UNIPURE RED LC381 EM	CI 77491	0.21
	UNIPURE WHITE LC981 EM	CI 77891 + Silica	7.88
	HYDROLITE 5 GREEN	Pentylene Glycol	5.00
	<b>Total:</b>		<b>100.00</b>

W = Water phase; F = Fat phase; T = Thickener phase; P = Pigment



## PROCEDURE:

1. Separately heat up water and fat phase (phase W+F) to 80°C
2. Add fat phase to water phase while stirring with homogenizer at 10.000 rpm.
3. Add thickener phase (phase T) and homogenize for 2 min at 20.000 rpm with homogenizer.
4. Cool down with IKA paddle stirrer at 300 rpm.
5. At below 35°C add perfume phase (phase P) and extra phase ( phase E).
6. Finally homogenize for 2 min at 15.000 rpm.

by PREMIUM ORGANIC

# PURIFYING FOAM CLEANSER

	INGREDIENT / TRADE NAME	INCI	%
A	WATER	Aqua	77.80
	CARIBGREEN AMLA EXTRACT	Embllica Officinalis Fruit Extract	2.00
	GALEAVOCADO WS	Avocado Oil Polyglyceryl-6 Esters	2.00
	PHENOXYETHANOL, ETHYLHEXYLGLYCERIN	Phenoxyethanol, Ethylhexylglycerin	0.90
	CHELANTE GLDA	Tetrasodium Glutamate Diacetate	0.20
B	SODIUM LAUROYL SARCOSINATE	Sodium Lauroyl Sarcosinate	9.00
	COCAMIDOPROPYL BETAINE	Cocamidopropyl Betaine	6.50
	ALPIN HEILMOOR EXTRACT™ (AHE)	Peat Extract	1.50
C	PARFUM	Parfum	0.10
		<b>Total:</b>	<b>100.00</b>



## PROCEDURE:

1. Mix the ingredients of phase A with a stirrer.
2. Add phase B while mixing slowly.
3. Add phase C.

# SHAPE MEMORY MOISTURIZING MASK

	INGREDIENT / TRADE NAME	INCI	%
A	PURIFIED WATER	Aqua / Water	51.69
	DERMOTHIX™ 100	Disteareth-100 IPDI	3.00
	DISTEARETH-100 IPDI	2.3-butanediol	1.00
	SODIUM HYALURONATE COSMETIC GRADE LOW MOLECULAR WEIGHT	Sodium Hyaluronate	0.30
	SODIUM HYALURONATE COSMETIC GRADE MEDIUM MOLECULAR WEIGHT	Sodium Hyaluronate	0.30
	ZENIBEE® CREAM	Octyldodecanol (And) Beeswax	8.00
B	MIDEKA XIMENIA SEED OIL REFINED	Ximenia Americana Seed Oil	2.00
	COSPHADERM® MAGNOLIA EXTRACT 98	Magnolia Officinalis Bark Extract	0.20
C	SALACOS® 168 EV	Dipentaerythryl Tetrahydroxystearate/Tetraisoostearate	1.00
	WAGLINOL 20080 MB	Coco-caprylate/Caprata	28.00
	ALPIN HEILMOOR EXTRACT™ (AHE)	Peat Extract	3.00
	COSPHADERM® T70 NON GMO ECO	Tocopherol (And) Helianthus Annuus Seed Oil	0.15
	BEG-800	Ethylhexylglycerin	0.80
	FRAGRANCE COSMOS LAVANDE AROMATIQUE 797	Parfum/Fragrance	0.36
	SODIUM HYDROXYDE 20%	Aqua (And) Sodium Hydroxyde	0.20
		<b>Total:</b>	<b>100.00</b>



## PROCEDURE:

1. Mix phase A and heat to 75°C.
2. Heat phase C to 75°C.
3. Once phase A is homogeneous add phase B under rotor stator.
4. Add phase C under rotor stator in phase A+B.
5. Cool to 35°C and introduce phase D.
6. Adjust pH to 5.50.

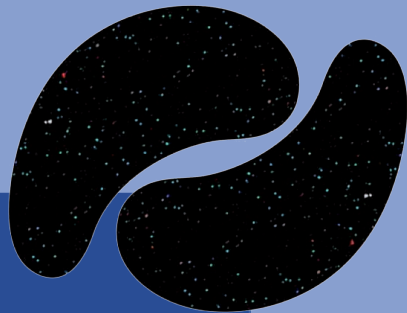
# T-ZONE HEILMOOR MASK

	INGREDIENT / TRADE NAME	INCI	%
A	WATER	Aqua	68.50
	GLYCERIN	Glycerin	3.00
	VIVAPUR CS TEX WET WIPE	Microcrystalline Cellulose, Cellulose Gum	1.50
	GALOLIVE OW	Polyglyceryl-4 Oleyl Ether Olivat	4.50
B	OCTYLDODECANOL	Octyldodecanol	4.00
	CARIBPURE SUNFLOWER OIL	Helianthus Annuus (Sunflower) Seed Oil	3.00
	CETEARYL ALCOHOL	Cetearyl Alcohol	3.50
	TOCOBEST DL-ALPHA- TOCOPHERYL ACETATE OIL	Tocopheryl Acetate	1.00
	ALPIN HEILMOOR EXTRACT™ (AHE)	Peat Extract	5.00
C	VITACEL CS 5 APPLE	Pyrus Malus Fiber	5.00
D	PHENOXYETHANOL, ETHYLHEXYLGLYCERIN	Phenoxyethanol, Ethylhexylglycerin	1.00
		<b>Total:</b>	<b>100.00</b>



## PROCEDURE:

1. Mix the ingredients of phase A and heat up to 70°C.
2. Separately mix phase B and heat up to 70°C.
3. Add phase B to A.
4. After cooling, add phases C and D.



## PROCEDURE:

1. Mix the ingredients of phase A and heat up to 70°C.
2. Separately mix phase B and heat up to 70°C.
3. Add phase B to A.
4. After cooling, add phases C and D.

## ALPIN MOISTURIZING EYE PATCHES

	INGREDIENT / TRADE NAME	INCI	%
A	WATER	Aqua	68.50
	GLYCERIN	Glycerin	3.00
	VIVAPUR CS TEX WET WIPE	Microcrystalline Cellulose, Cellulose Gum	1.50
	GALOLIVE OW	Polyglyceryl-4 Oleyl Ether Olivatate	4.50
B	OCTYLDODECANOL	Octyldodecanol	4.00
	CARIBPURE SUNFLOWER OIL	Helianthus Annuus (Sunflower) Seed Oil	3.00
	CETEARYL ALCOHOL	Cetearyl Alcohol	3.50
	TOCOBEST DL-ALPHA- TOCOPHERYL ACETATE OIL	Tocopheryl Acetate	1.00
	ALPIN HEILMOOR EXTRACT™ (AHE)	Peat Extract	5.00
C	VITACEL CS 5 APPLE	Pyrus Malus Fiber	5.00
D	PHENOXYETHANOL, ETHYLHEXYLGLYCERIN	Phenoxyethanol, Ethylhexylglycerin	1.00
		<b>Total:</b>	<b>100.00</b>





## PROCEDURE:

1. Add phase C to phase A with stirring (rotor stator).
2. Heat phase A + C and B to 80°C.
3. Add phase B to phase A + C.
4. Once the mixture is homogeneous, add the ingredients of phase D one by one.
5. Then add E.
6. Cool and pour the product to 65°C.

## ANTI-POLLUTION COMPACT FOUNDATION

	INGREDIENT / TRADE NAME	INCI	%
A	COSPHADERM® FEEL	Triheptanoin	43.00
	SOLDOC PGPR	Glycerin	6.00
B	CASID® HSA	12-hydroxystearic Acid (And) Stearic Acid	9.97
C	SYMPHOLIGHT WW-E	Titanium Dioxide (And) Silica (And) Alumina	11.00
	SYMPHOLIGHT YW-TE	Iron Oxide (And) Silica	3.20
	SYMPHOLIGHT RW-TE	Iron Oxide (And) Silica	0.65
	SYMPHOLIGHT BW-TE	Iron Oxide (And) Silica	0.28
	ALPIN HEILMOOR EXTRACT™ (AHE)	Peat Extract	1.00
D	CHIFFONSIL P3-R	Silica	7.00
	BA4	Silica	10.00
	SATINIER M5	Silica	3.00
	MIRINAE® A-1000D ALUMINA POWDER	Alumina	4.00
	FRAGRANCE COSMOS PETALES NEROLI D91	Parfum / Fragrance	0.20
E	ALGAKTIV® URBANSKN	Phaeodactylum Tricornutum Extract (And) Helianthus Annuus (Sunflower) Seed Oil (And) Tocopherol	0.50
	COSPHADERM® T70 NON GMO ECO	Tocopherol (And) Helianthus Annuus Seed Oil	0.20
		<b>Total:</b>	<b>100.00</b>



## PROCEDURE:

1. Heat up water phase (phase W) to 80°C
2. Add thickener phase (phase T) to water phase (phase W) while stirring with homogenizer at 10.000 rpm.
3. Then homogenize for 2 min at 15.000 rpm to form a gel without lumps.
4. Cool down with stirring at 300 rpm with paddle stirrer and add silica phase (phase S) in portions to phase while stirring.
5. At 40°C add detergent phase (phase D) and aroma phase (phase A).
6. Stir for another 15 min.

by PREMIUM ORGANIC

# AHE TOOTHPASTE

	INGREDIENT / TRADE NAME	INCI	%
W	WATER, DEIONIZED	Water	33.50
	BEAUTÉ BY ROQUETTE PO 370	Xylitol	19.50
T	GLYCERIN 99,5% VEGAN	Glycerin + Aqua	10.00
	KELTROL CG-V	Xantham Gum	1.00
S	ALPIN HEILMOOR EXTRACT™ (AHE)	Peat Extract	5.00
	ZEODENT 116	Hydrated Silica	7.00
	ZEODENT 167	Hydrated Silica	8.00
D	AMISOFT ECS-22W	Aqua + Disodium Cocoyl Glutamate	15.00
A	93468 ESSENTIAL OIL BLEND PEPPERMINT OIL	Parfum	1.00
		<b>Total:</b>	<b>100.00</b>

W = Water phase; T = Thickener phase; S = Silica phase;  
D = Detergent phase; A = Aroma phase



## PROCEDURE:

1. Separately heat up water phase (W) to 60°C and detergent phase (D) to 40°C
2. Add thickener phase (phase T) to water phase and homogenize for 2 min at 20.000 rpm with homogenizer.
3. Cool down with IKA paddle stirrer at 300 rpm.
4. At 40°C add detergent phase (phase D).
5. At 30°C add perfume phase (phase P).
6. Finally homogenize for 2 min at 15.000 rpm.

by PREMIUM ORGANIC

# AHE HAIR SHAMPOO

	INGREDIENT / TRADE NAME	INCI	%
	WATER, DEIONIZED	Aqua	48.40
	ALPIN HEILMOOR EXTRACT™ (AHE)	Peat Extract	0.30
W	COSPHADEM LA-T	Levulinic Acid + Glycerin + Sodium Levulinate + Aqua	4.00
	COSPHADEM GMUD	Glyceryl Undecylenate	2.00
	CITRIC ACID	Citric Acid	0.25
	AMISOFT CS-22	Sodium Cocoyl Glutamate + Disodium Cocoyl Glutamate + Water	20.00
	ARGAN OIL COLD PRESSED	Argania Spinosa Kernel Oil	0.50
	COSPHADEM PA ECONAT	Phytic Acid + Aqua	0.25
	ALMOND OIL COLD PRESSED ORGANIC	Sodium Stearoyl Glutamate	0.50
	D	NOVOVIT TOCOPHEROL MIX TM 70 N	Tocopherol + Helianthus Annuus (Sunflower) Seed Oil
	TEGO BETAINE 810	Capryl/Capramidopropyl Betaine	5.00
	PLANTACARE 2000 UP	Decyl Glucoside	4.75
	PLANTACARE 1200 UP/MB	Lauryl Glucoside	4.75
	PLANTACARE 818 UP	Coco Glucoside	6.00
T	AMIGUM	Sclerotium Gum	2.00
P	PERFUME NICE DAY 441411	Parfum	0.80
		<b>Total:</b>	<b>100.00</b>

W = Water phase; T = Thickener phase; D = Detergent phase; P = Pigment phase



## PROCEDURE:

1. Mix phase A and heat to 75°C.
2. Heat phase C to 75°C.
3. Once phase A is homogeneous add phase B under rotor stator.
4. Add phase C under rotor stator in phase A+B.
5. Cool to 35°C and introduce phase D.
6. Adjust pH to 5.50.

## MICROBIOME MOISTURE HAIR MASK

	INGREDIENT / TRADE NAME	INCI	%
A	WATER	Aqua	61.43
	BENTONE HYDROCLAY™ 900	Hectorite & Hydroxyethylcellulose	1.50
	GLYCERINE	Glycerin	5.00
	ALPIN HEILMOOR EXTRACT™ (AHE)	Peat Extract	1.00
	PHYTOVIE™ DEFENSE	Brassica Campestris/Aleurites Fordi Oil Copolymer	2.00
B	FANCOR ABYSSINIAN OIL	Crambe Abyssinica Seed Oil	10.00
	BERGACARE SB	Aqua + Disodium Cocoyl Glutamate	5.00
	EMULPHARMA COREOSOME MB	Cetearyl Alcohol, Glyceryl Stearate, Sorbitan Stearate & Cetearyl Glucoside	6.00
	STEARIC ACID	Stearic Acid	5.00
	Baobab Tein NPNF™	Hydrolyzed Adansonia Digitata Seed Extract	2.00
C	FRUSIPE	Phenoxyethanol & Ethylhexylglycerin	1.00
	Unwind Ecoboost		0.07
		<b>Total:</b>	<b>100,00</b>

W = Water phase; T = Thickener phase; S = Silica phase;  
D = Detangler phase; A = Aroma phase

Please contact us directly for more informations on further formulations, samples and products.

Let's stay in touch!

**Contact**

PREMIUM ORGANIC GmbH  
[www.premium-organic.com](http://www.premium-organic.com)  
[office@premium-organic.com](mailto:office@premium-organic.com)  
AUSTRIA

## NON-GUARANTEE

The information in this publication is given in good faith by PREMIUM ORGANIC by way of general guidance and for reference purposes only. The information should not be construed as granting a license to practice any methods or compositions of matter covered by patents. PREMIUM ORGANIC assumes no liability in relation to the information and gives no warranty regarding the suitability of the product and/or ingredients described for a particular use. The use made of the product and/or ingredients described by the recipient and any claims or representations made by the recipient in respect of such product and/or ingredients are the responsibility of the recipient. The recipient is solely responsible for ensuring that products marketed to consumers comply with all relevant laws and regulations.